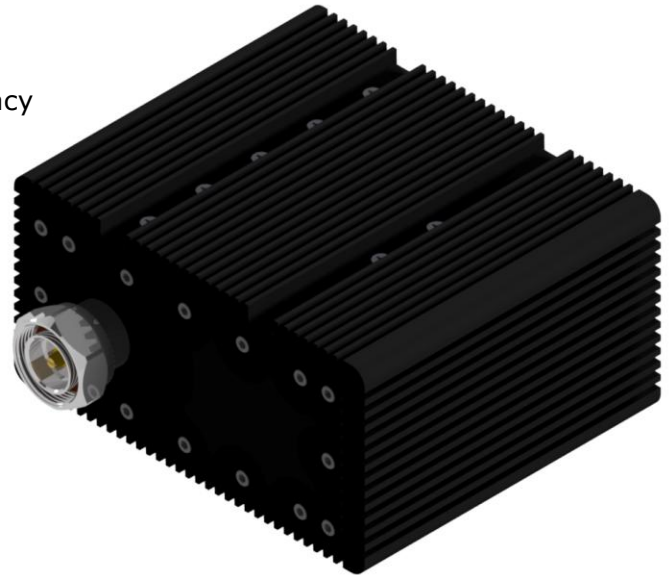


311L-XX-100 Series of In-Line Low-PIM Fixed Attenuators are designed for 100W applications from 600MHz - 2700MHz. These attenuators are guaranteed for Low-PIM performance in the entire frequency range. These units are rugged in their construction and can handle harsh environmental conditions. They are perfect for indoor and outdoor applications. Standard values include are listed in the specifications below. **Custom attenuation values can also be manufactured on request.**

FEATURES:

- Fixed In-Line Attenuator with a high degree of accuracy
- Small Form-Factor and Light Weight
- Flat response from 600MHz - 2700MHz
- Conventional Male(IN) / Female(OUT)
- Outstanding PIM performance, -161dBc typical
- Low VSWR across the band
- Ease of Mounting with mounting brackets
- RoHS Complaint
- Weatherproof / Outdoor unit
- In Stock to low lead time delivery



ELECTRICAL SPECIFICATIONS:

Attenuation	3dB	5dB	6dB	10dB	15dB	20dB	25dB	30dB	40dB
Attenuation Accuracy	±0.5	±0.5	±0.5	±1.0	±1.0	±1.0	±1.25	±1.25	±1.5
Frequency Range	600MHz - 2700MHz								
Return Loss	20 dB (Typ)								
Intermodulation (PIM - 3 rd)	-161 dBc (Typ) (2 Tones +43 dBm)								
Impedance	50 Ohms								
Input Power	100W (Average Power)								

MECHANICAL SPECIFICATIONS:

Connectors:	7/16 DIN(D) / Mini-DIN(MD) / 4.3-10(D43) / Type-N(N) / Nex-10(X10)
Housing Finish:	Aluminum Body
Mounting Method:	Mounting Bracket
Temperature Range:	-35°C to 75°C
Relative Humidity:	5% - 95%
Weight:	7.75 lbs
Environment:	IP67

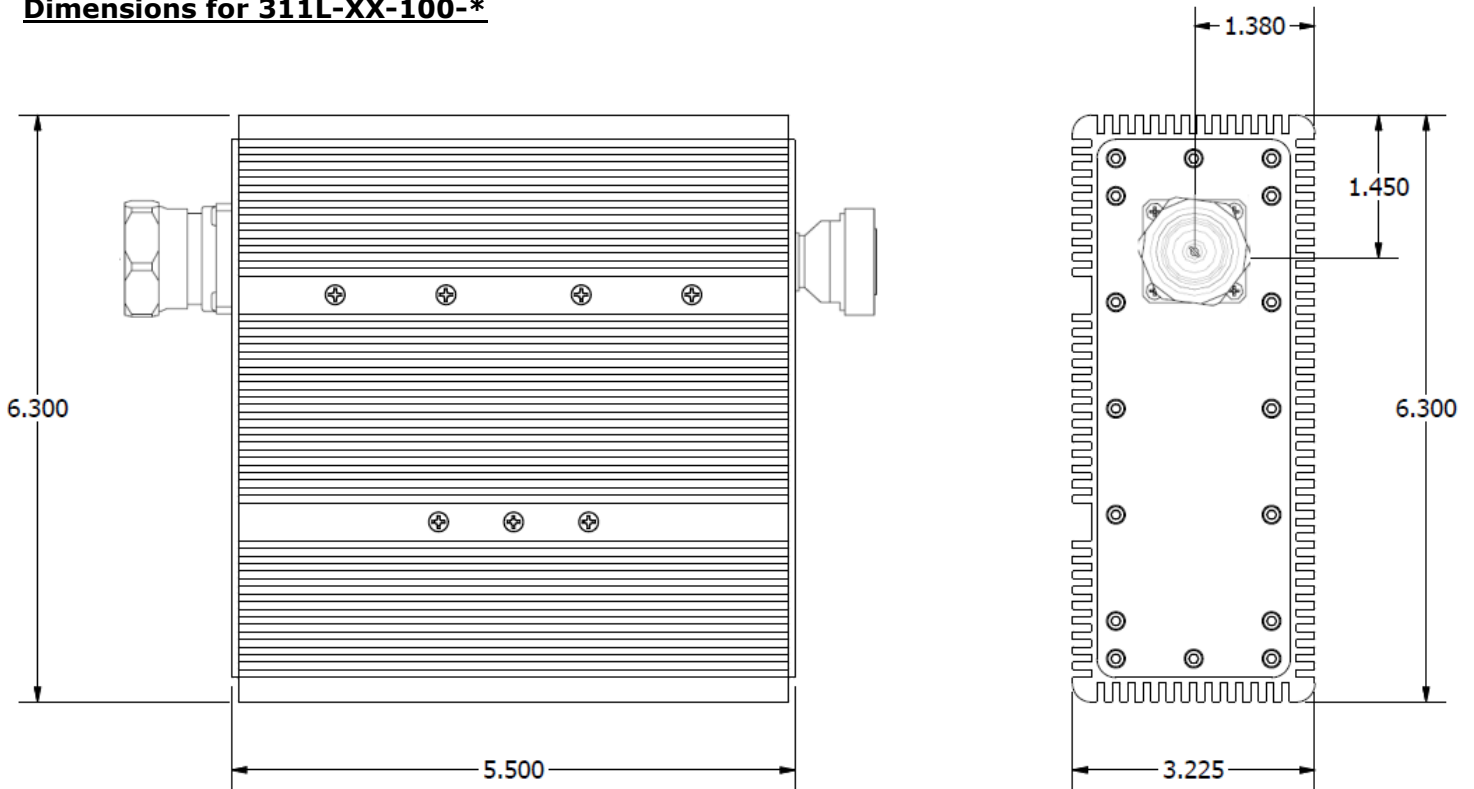
***** ORDERING INFO:**

Part No.: Part#: 311L-XX-100-*

XX - Attenuation Value

* - Connector Option

Dimensions for 311L-XX-100-*



Please contact our sales department at 737-200-7090 or sales@InnowaveRF.com for any custom requirements.

© Innowave RF, LLC. All Rights Reserved. Specs can change without notice. Drawings are for reference purpose only.