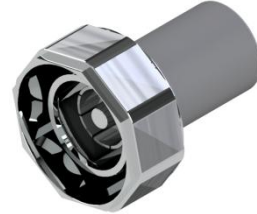


**301-2 Series** of RF Terminations can be used for a broad range of applications operating from DC to 3 GHz and is rated at 2 Watts power. These are precision machined, robust and can be used over a wide range of temperature and environmental conditions. They are perfect for both Indoor and Outdoor DAS applications.

**FEATURES:**

- Superior Mechanical Construction
- 2 Watts Power Handling
- Low VSWR from DC to 3GHz
- RoHS Complaint
- In stock and available immediately
- Available in DIN, Mini-DIN, 4.3-10 or Type-N Connectors



**ELECTRICAL & MECHANICAL SPECIFICATIONS:**

**\*\*\* ORDERING INFO:**

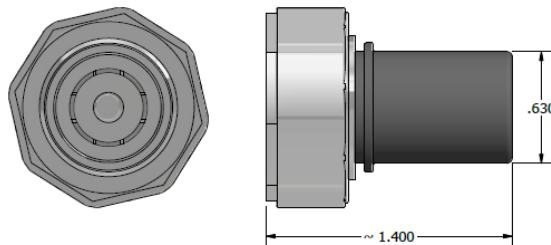
**Part #:** 301-2-\*  
(\* - Connector Option)

Frequency Range:	DC – 3 GHz
VSWR	≤ 1.20 (Typ)
Input power:	2 Watts (Avg)
Impedance:	50 Ω
Connectors Options:	7/16 DIN (D) Mini-DIN (MD) 4.3-10 (D43) Type-N (N)
Housing Finish:	Aluminum Body
Mounting Method:	Mounting Panel
Temperature Range:	-35°C to 75°C
Weight:	0.25lbs
Relative Humidity:	5% - 95%
Environment:	IP67

**APPLICATIONS:**

- Indoor & Outdoor DAS
- Wi-Fi / WiMAX
- Cellular and GPS
- Communication Transmitter and Receiver
- Public Safety and ISM
- Instrumentation

**Dimensions for 301-2-D43**



Please contact our sales department at 737-200-7090 or [sales@InnowaveRF.com](mailto:sales@InnowaveRF.com) for any custom requirements.

© Innowave RF, LLC. All Rights Reserved. Specs can change without notice. Drawings are for reference purpose only.