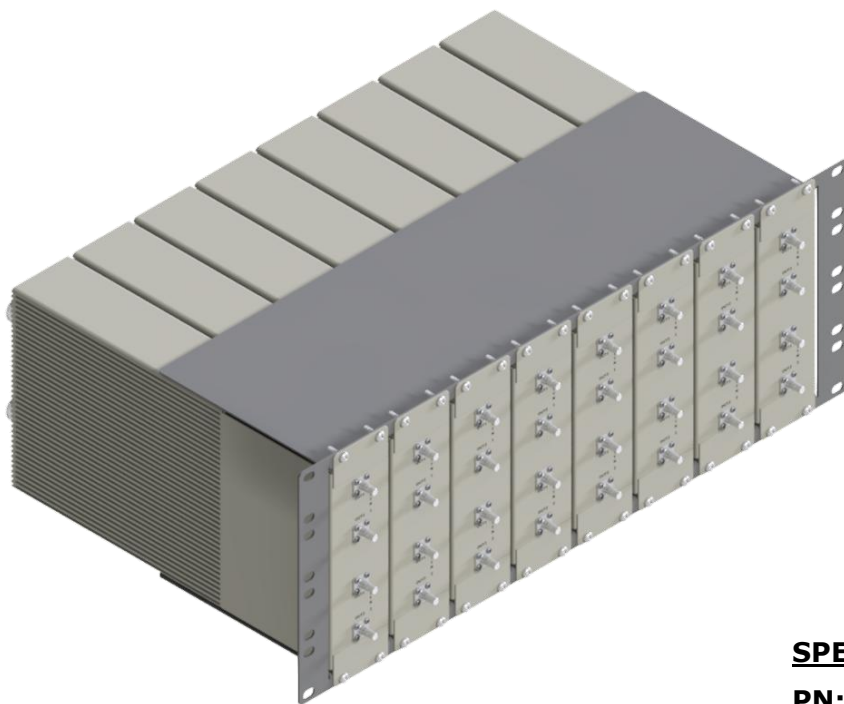


**ASSM-112B-A30-QMA** is an Assembly DAS Tray solution with 2 sets of 30dB Attenuator in conjunction with a 2-Way Reactive Splitter. Each of the Attenuator/Splitter has an independent RF path. The total Insertion Loss for each RF path is 33dB. They can be mounted on vertically on a 4RU Sub-Rack Chassis (PN: R314LV-4RU), with up to 8 of these Assembly Modules on a single Sub-Rack. The Assembly Modules are "Modular" and can be added as and when sectors are added. Each Attenuator + Splitter path can handle 50W of power and operates from 600MHz - 4200MHz. These Modules are guaranteed for Low-PIM performance in the entire frequency range. They come with 4.3-10(F) Connector on the Input side and QMA(F) connector on the Output side.

This DAS Tray Solution is a complete **Passive System** and requires no additional Interface Card or AC power for this to operate. Other Attenuation values can also be provided.



- 30dB Attenuator in conjunction with a 2-Way Reactive Splitter
- Insertion Loss / RF Path is 33dB
- Up to 8 Attenuator Modules
- Each Module has 2x 30dB Attn + 2-Way Splitter, each having an independent RF Path.
- INPUT - 4.3-10 (F)  
OUTPUT - QMA (F)
- **CBRS / C-Band** Ready
- Low PIM , -161dBc
- In Stock to low lead time delivery

**SPECIFICATIONS for 4RU Sub-Rack**

**PN: R314LV-4RU:**

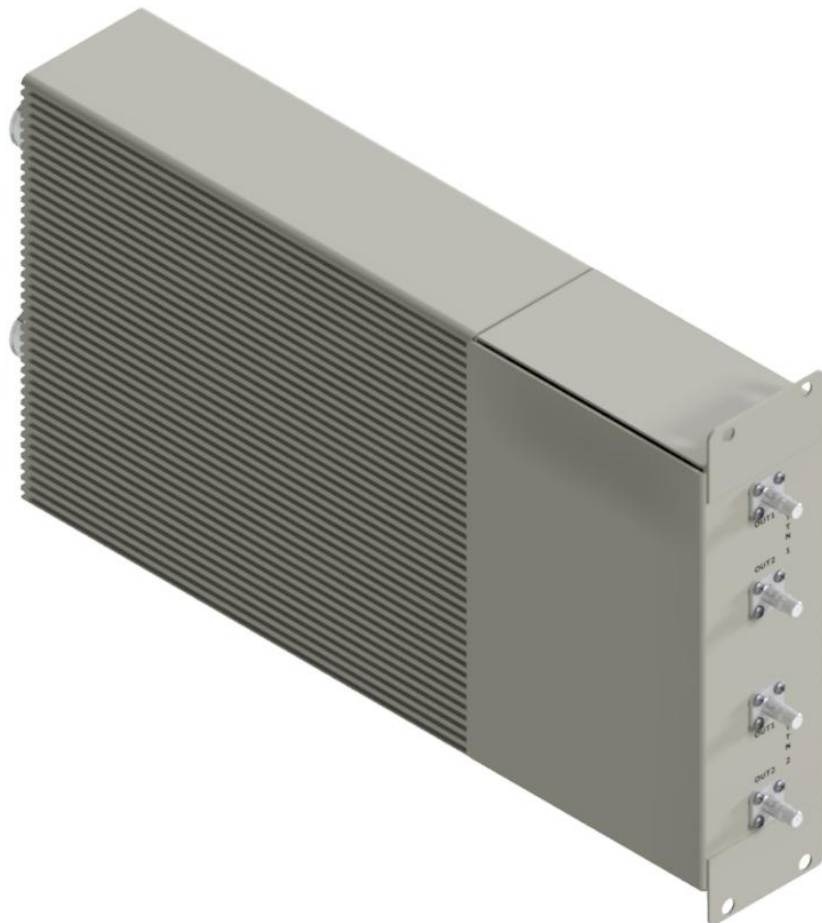
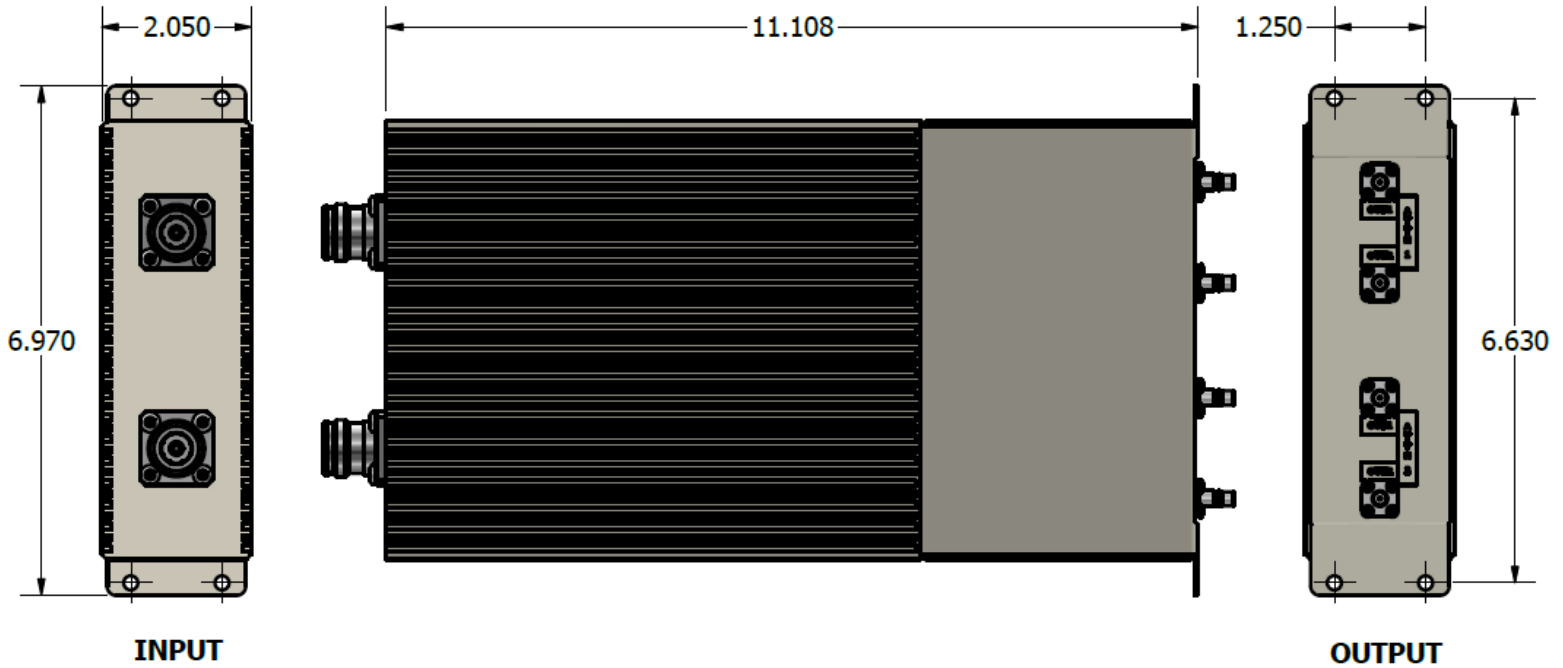
Assembly Modules	8 (max)
Rack Space Needed	4 RU
Temperature Range	-30°C to 70°C
Weight	3.50 lbs
Dimensions	6.97"(H) x 19.00"(W) x 2.00"(D)

**SPECIFICATIONS for ATTN+SPLITTER MODULE**

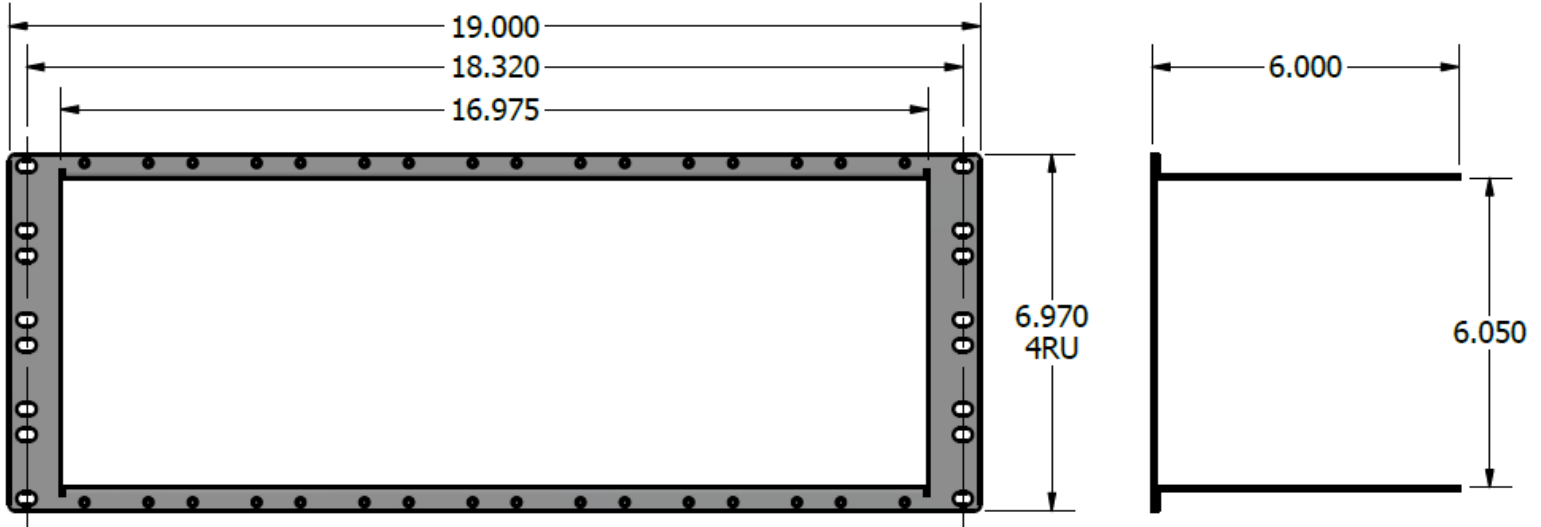
**PN: ASSM-112B-A30-QMA:**

Attenuation	33dB (Including 3dB Splitter Loss)
Attenuation Accuracy	±1.50
No. of Attenuator + 2-Way Splitter Path	2 (Independent RF Path)
Frequency Range	600MHz - 4200MHz
Return Loss	20 dB (Typ)
Intermodulation (PIM - 3 <sup>rd</sup> )	-161 dBc (Typ) (2 Tones +43 dBm)
Impedance	50 Ohms
Input Power	50W (Average Power)
Temperature Range	-30°C to 70°C
Connector	IN - 4.3-10(F) / OUT - 2x QMA(F)
Weight	9.50 lbs
Dimensions (in)	6.97"(H) x 2.05"(W) x 7.31"(D)

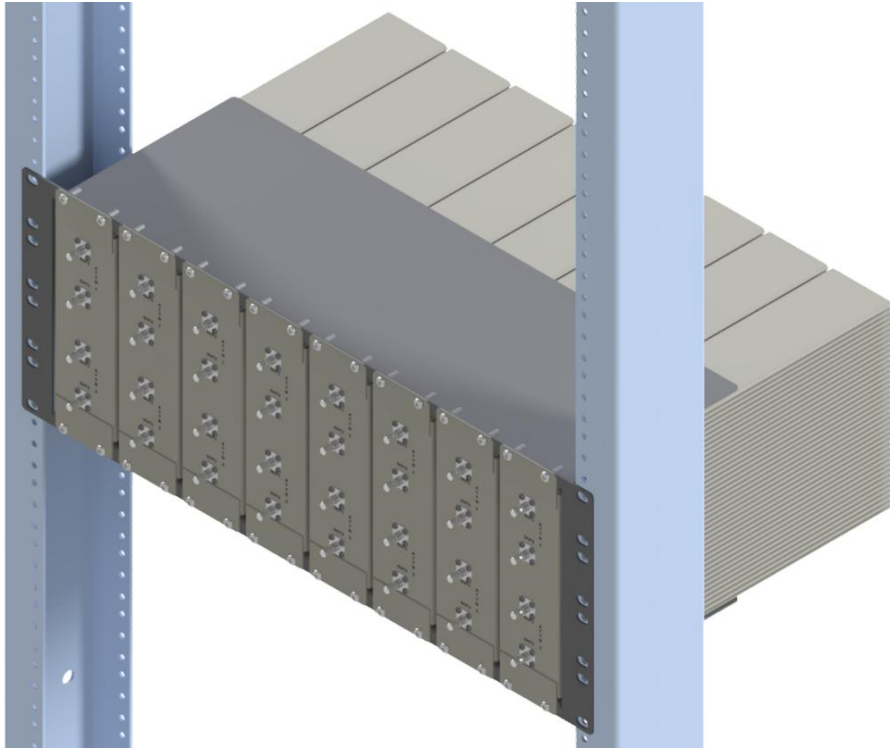
**Dimensions for Assembly Module (PN: ASSM-112B-A30-QMA)**



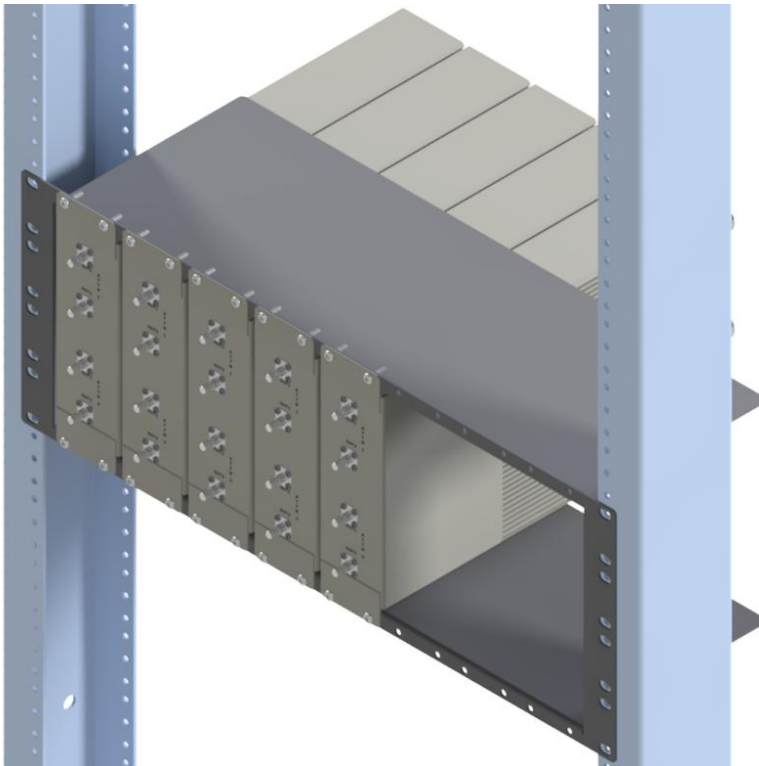
**Dimensions for 4RU Sub-Rack (PN: R314LV-4RU)**



**R314LV-4RU Assembly with 8x Attenuator + 2-Way Splitter Modules**



**R314LV-4RU Assembly with 5x Attenuator + 2-Way Splitter Modules**



Please contact our sales department at 737-200-7090 or [sales@InnowaveRF.com](mailto:sales@InnowaveRF.com) for any custom requirements.

© Innowave RF, LLC. All Rights Reserved. Specs can change without notice. Drawings are for reference purpose only.