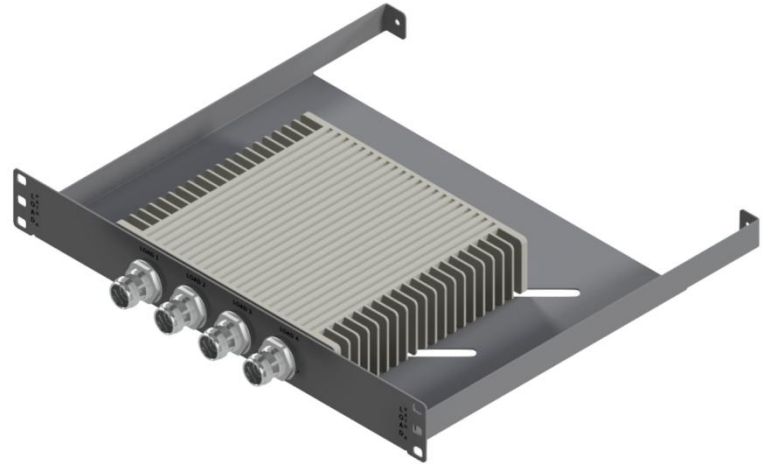
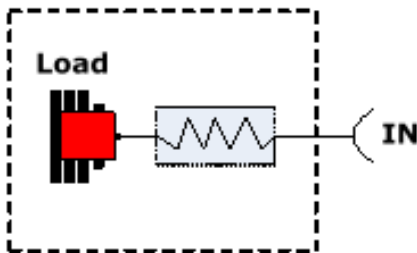


FEATURES:

- Termination Module for **IDR Series** DRAN system
- Each Module has 4x 50W Terminations with each having an independent RF Path.
- 4.3-10 connectors' standard. Available in Nex10 option as well
- **CBRS / C-Band / LTE-LAA** Ready
- **-161dBc PIM** with Low Insertion Loss
- In Stock to low lead time delivery



Block Diagram for Termination



ELECTRICAL SPECIFICATIONS:

Frequency Range	600 MHz – 6000 MHz
No. of Loads	8 (Independent RF Path)
VSWR	≤ 1.25 @ 600-3300 MHz ≤ 1.20 @ 3300-4200 MHz ≤ 1.30 @ 4200-6000 MHz
Power Handling	50 W (Avg)
Intermodulation (PIM - 3 rd)	-163 dBc (Typ) (2 Tones +43 dBm)
Impedance	50 Ohms
Temperature Range	-30°C to 75°C

MECHANICAL SPECIFICATIONS:

Temperature Range	-30°C to 70°C
Weight	8.00 lbs
Connectors	Standard - 4.3-10 (F) Also Available in Nex10(F)
Relative Humidity	5% - 95%
Dimensions (in)	13.95"(W) x 1.725"(H) x 11.98"(D)

Please contact our sales department at 737-200-7090 or sales@InnowaveRF.com for any custom requirements.

© Innowave RF, LLC. All Rights Reserved. Specs can change without notice. Drawings are for reference purpose only.