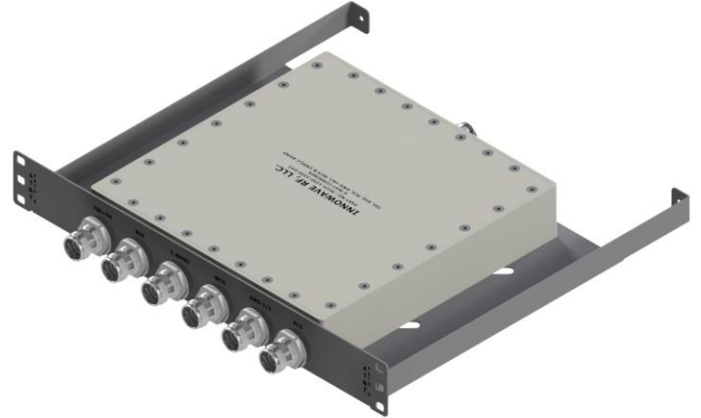


**FEATURES:**

- Hexaplexer Modules for **IDR Series** DRAN system
- Up to 6 bands can be combined per Carrier
- Minimum 40dB Isolation
- **-161dBc PIM** with Low Insertion Loss
- Interchangeable Modules for easy upgrades



**ELECTRICAL SPECIFICATIONS:**

Freq Bands Part Numbers	600(B71) 700-Cell	700-FN (B14)	850	PCS	AWS-1 AWS-3	WCS	BRS	DoD CBRS C-Band
R962H-1250-3390-D43	PORT 1	PORT 1	PORT 2	PORT 3	PORT 4	PORT 5		PORT 6
R962H-1250-3800-D43	PORT 1	PORT 1	PORT 2	PORT 3	PORT 4			PORT 5 (DoD) PORT 6 (C-Band)
R962HA6-1250-3800-D43	PORT 1 (6dB ATTN)	PORT 1 (6dB ATTN)	PORT 2 (6dB ATTN)	PORT 3	PORT 4			PORT 5 (DoD) PORT 6 (C-Band)
Passband Insertion Loss	0.45 dB							
Isolation	≥40 dB							
Return Loss	20 dB							
Impedance	50 Ohms							
Input Power / Port	150 Watts (Avg)							
Intermodulation (PIM - 3 <sup>rd</sup> )	-161dBc (2 Tones +43 dBm)							
Connectors	4.3-10 or Nex10							
Temperature	-30°C to +70°C							
Rack Tray Dimensions	13.95"(W) x 1.725"(H) x 11.98"(D)							
*** For any other combination of bands, please contact us. ***								

Please contact our sales department at 737-200-7090 or [sales@InnowaveRF.com](mailto:sales@InnowaveRF.com) for any custom requirements.

© Innowave RF, LLC. All Rights Reserved. Specs can change without notice. Drawings are for reference purpose only.