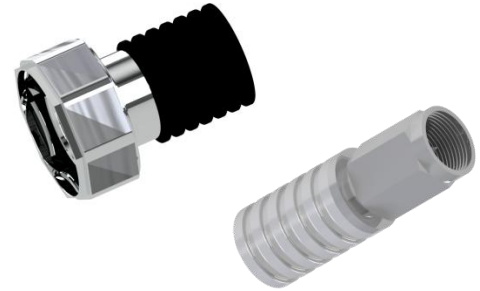


**303-5 Series** of RF Terminations can be used for a broad range of applications operating from DC to 6000 MHz and is rated at 5 Watts power. These are precision machined, robust and can be used over a wide range of temperature and environmental conditions. They are perfect for both Indoor and Outdoor DAS applications.

**FEATURES:**

- **CBRS, C-Band and LTE-LAA** Ready
- Superior Mechanical Construction
- 5 Watts Power Handling
- Low VSWR from DC to 6000MHz
- *RoHS* Compliant
- In stock and available immediately
- Available in 4.3-10 or NEX10 Connectors



**\*\*\* ORDERING INFO:**

- 4.3-10 Connector:** 303-5-D43
- NEX10 Connector:** 303-5-X10

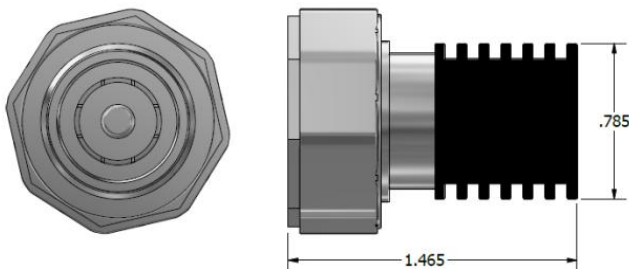
**APPLICATIONS:**

- Indoor & Outdoor DAS
- Wi-Fi / WiMAX
- Cellular and GPS
- Communication Transmitter and Receiver
- Public Safety and ISM
- Instrumentation

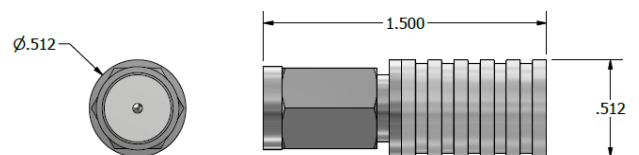
**ELECTRICAL & MECHANICAL SPECIFICATIONS:**

Frequency Range:	DC – 6000 MHz
VSWR	≤ 1.20 (Typ) @ DC-3 GHz ≤ 1.22 (Typ) @ 3-6 GHz
Input power:	5 Watts (Avg)
Impedance:	50 Ω
Connectors Options:	4.3-10 (D43) NEX10 (X10)
Housing Finish:	Aluminum Body
Temperature Range:	-35°C to 75°C
Weight:	0.25lbs
Relative Humidity:	5% - 95%
Environment:	IP67

**Dimensions for 303-5-D43**



**Dimensions for 303-5-X10**



Please contact our sales department at 737-200-7090 or [sales@InnowaveRF.com](mailto:sales@InnowaveRF.com) for any custom requirements.

© Innowave RF, LLC. All Rights Reserved. Specs can change without notice. Drawings are for reference purpose only.