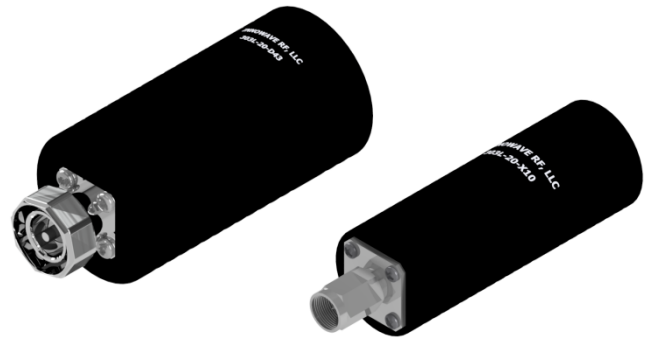


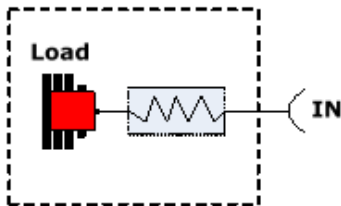
303L-20 Series of Low-PIM Ultra Wideband RF Terminations operates from 600MHz to 6000MHz and is rated at 20 Watts of power. These terminations are mechanically well constructed to allow maximum heat dissipation to sustain long life by preventing temperature hot spots. These are precision machined, robust and can be used over a wide range of temperature and environmental conditions. These terminations are perfect to tap unused Radio ports. They can be used for both Indoor and Outdoor DAS applications.

FEATURES:

- **CBRS, C-Band and LTE-LAA** Ready
- Low-PIM performance, -161dBc (min)
- Superior Mechanical Construction
- 20 Watts Power Handling
- Low VSWR from 600MHz to 6000MHz
- *RoHS* Compliant
- In stock and available immediately
- Available in 4.3-10 or NEX10 connectors



Block Diagram for 303L-20 Series



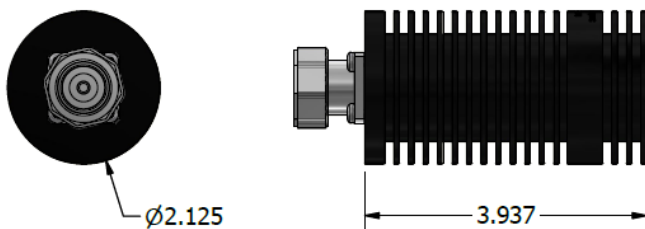
ELECTRICAL & MECHANICAL SPECIFICATIONS:

| | |
|------------------------------|---|
| Frequency Range: | 600MHz – 6000MHz |
| VSWR | ≤ 1.25 (Typ) @ 600-3300 MHz ≤ 1.13 (Typ) @ 3300-4200 MHz ≤ 1.30 (Typ) @ 4200-6000 MHz |
| Input power: | 20 Watts (Avg) |
| Impedance: | 50 Ω |
| Intermodulation (PIM - 3rd): | -161 dBc (Min) (2Tones +43dBm) |
| Connectors: | 4.3-10 (D43) NEX10 (X10) |
| Housing Finish: | Aluminum Body |
| Mounting Method: | Mounting Panel |
| Weight: | 1.25 lbs |
| Temperature Range: | -35°C to 75°C |
| Relative Humidity: | 5% - 95% |
| Environment: | IP67 |

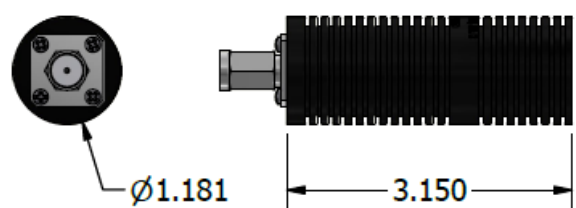
***** ORDERING INFO:**

- 4.3-10 Connector:** 303L-20-D43
NEX10 Connector: 303L-20-X10

Dimensions for 303L-20-D43



Dimensions for 303L-20-X10



Please contact our sales department at 737-200-7090 or sales@InnowaveRF.com for any custom requirements.

© Innowave RF, LLC. All Rights Reserved. Specs can change without notice. Drawings are for reference purpose only.