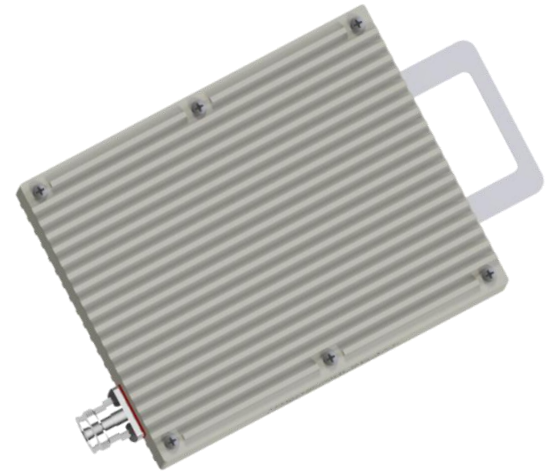


Innovation in Every Wave

303L-200 Series of Ultra Low-PIM Wideband RF Terminations operates from 600MHz to 6000MHz and is rated at 200 Watts of power. These terminations are mechanically well constructed to allow maximum heat dissipation to sustain long life by preventing temperature hot spots. These are precision machined, robust and can be used over a wide range of temperature and environmental conditions. These ultra Low PIM terminations are perfect to test for unwanted PIM generated at Radio Heads. The terminations come with 4.3-10 Female connectors standard. They can be used for both Indoor and Outdoor applications.

FEATURES:

- **CBRS, C-Band and LTE-LAA** Ready
- Ultra Low-PIM performance, -168dBc
- Superior Mechanical Construction
- 200 Watts Power Handling
- Mounting Bracket for easy mounting in the field
- Low VSWR from 600MHz to 6000MHz
- *RoHS* Compliant
- In stock and available immediately
- Available in 4.3-10 (F) standard



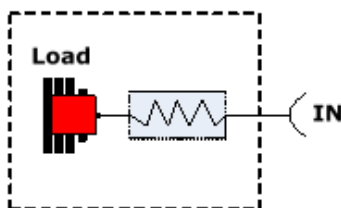
ELECTRICAL & MECHANICAL SPECIFICATIONS:

Frequency Range:	600MHz – 6000MHz
VSWR	≤ 1.25 (Typ) @ 600-3300 MHz ≤ 1.20 (Typ) @ 3300-4200 MHz ≤ 1.25 (Typ) @ 4200-6000 MHz
Input power:	200 Watts (Avg)
Impedance:	50 Ω
Intermodulation (PIM - 3rd):	-168 dBc (2Tones +46dBm)
Connectors (Standard):	4.3-10 Female (D43F)
Housing Finish:	Aluminum Body
Mounting Method:	Mounting Hole
Weight:	5.75 lbs
Temperature Range:	-35°C to 75°C
Relative Humidity:	5% - 95%
Environment:	IP67

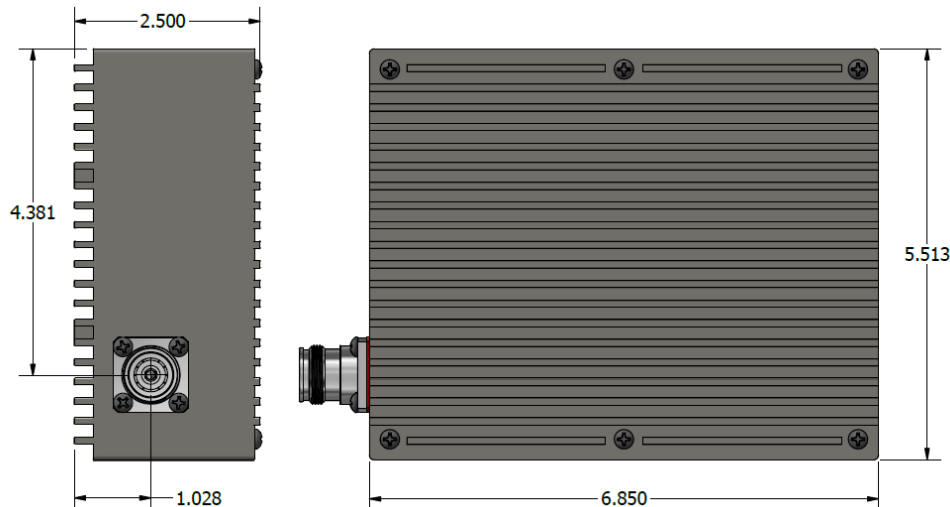
***** ORDERING INFO:**

4.3-10 (F) Conn:	303L-200-D43F
(Standard)	
4.3-10 (M) Conn:	303L-200-D43

Block Diagram for 303L-200 Series



Dimensions for 303L-200-D43



Please contact our sales department at 737-200-7090 or sales@InnowaveRF.com for any custom requirements.

© Innowave RF, LLC. All Rights Reserved. Specs can change without notice. Drawings are for reference purpose only.